



GOOD MORNING  
Have Good Trading Day

THURSDAY



Price is what you pay.  
Value is what you get.

- Warren Buffet



## MARKET PULSE

### INDIAN INDICES

NAME	CMP	NET CH.	%
SENSEX	28220	-113	-0.40
NIFTY	8743	-25	-0.29

### INDIAN ADR'S

SYMBOL	CLOSE	GAIN/ LOSS %
DRREDDY	46.54	-0.77
HDFCBANK	72.69	-0.62
ICICIBK	7.70	+0.13
INFY	15.96	+0.06
TATAMOTOR	42.09	+3.06
WIPRO	9.72	+0.31

### FII AND MF ACTIVITY

SYMBOL	In Crs.
FIIs Eq (Provisional)	243.00
FIIs Index Future	153.73
FIIs Index Options	700.64
FIIs Stock Future	-388.94
FIIs Stock Options	4.84
DIIs Eq (Provisional)	-349.86

### CURRENCY

RBI RATE	05-OCT-2016
RUPEE - \$	66.5699
EURO	74.6515
YEN 100	64.7000
GBP	84.4772

## MARKET PULSE

### GLOBAL INDICES

NAME	CMP	NET CH.	%
DOW	18281	+112	+0.62
NASDAQ	5316	+26	+0.50
NIKKEI	16915	+96	+0.57
HANG SENG	23876	+87	+0.37
SGX NIFTY	8795	+24	+0.28

### WORLD COMMODITIES

FUTURE	U\$\$	CHANGES
CRUDE	49.49	-0.34
NATURAL GAS	3.026	-0.015
GOLD	1268.2	-0.4
SILVER	17.740	+0.045
COPPER	2.1695	+0.0050

### WORLD EVENTS

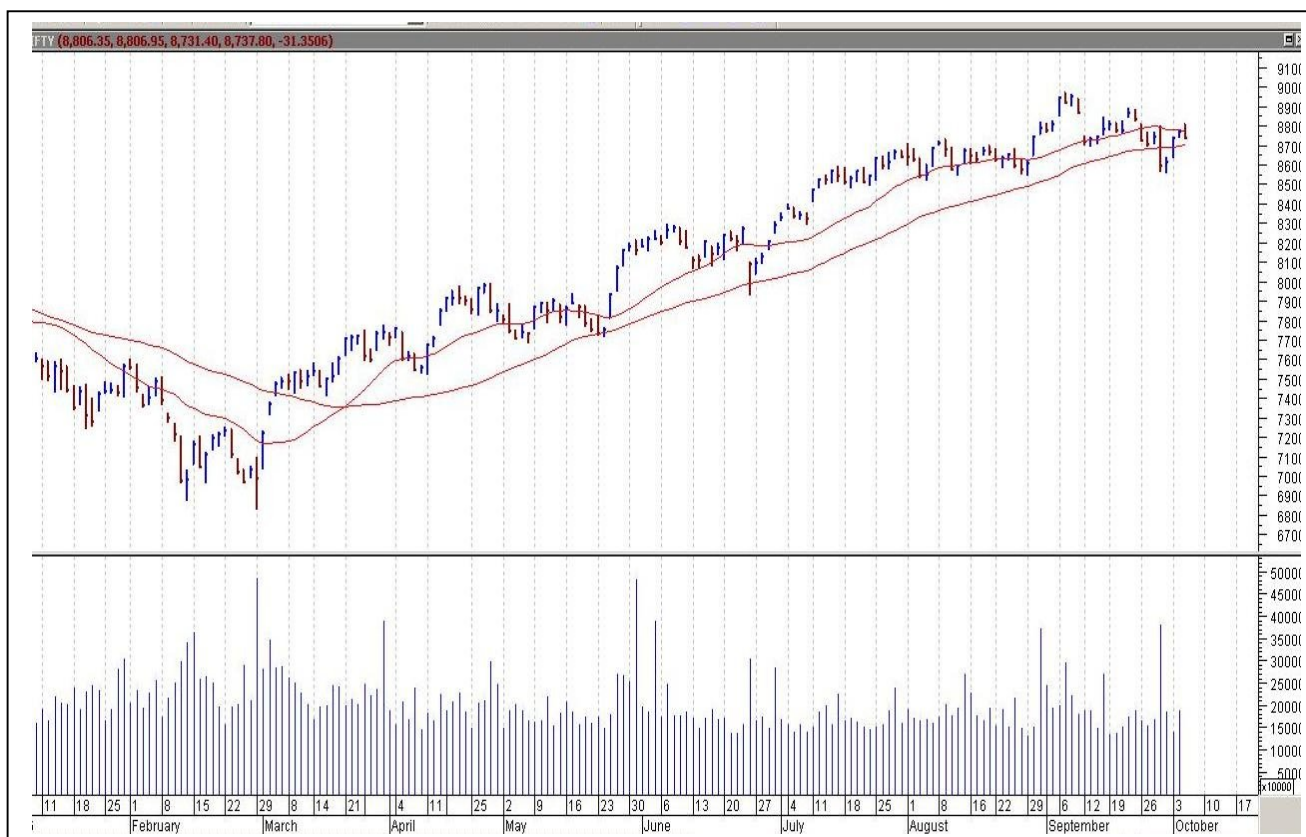
- US: Unemployment Claims
- UK: NIL

## TOP STORY

- Orient in talks to buy 74 percent in JP's Bhilai Cement for Rs 750 crore - ET
- SEBI's initial probe suggests Yes Bank violated norms – Mint
- NMDC Sets Lump Ore Price At Rs 2,100/WMT Vs Rs 1,700/WMT In August Fines At Rs 1,760/WMT Vs Rs 1,460/WMT In August
- ONGC , OIL are not to bid for 67 discovered oil and gas fields
- Unichem Laboratories recalls 368 bottles of drugs in US
- Phillips Carbon Black approves amalgamation of unit, Goodluck Dealcom with co
- JSPL defaulted on NCD payments
- UCO Bank - govt gets exemption from open offer by SEBI
- Transformers and Rectifiers India enters JV with Jingke, China To Mfg, Market & Distribute Pdts In India



## NIFTY CHART



## MARKET COMMENTARY

Wednesday turned out to be a weak day for the Indian equity indices, which got pounded by over quarter percentage on feeble global cues. Domestic sentiment was hit as US equities ended lower in wake of a report that the European Central Bank could start winding down its quantitative-easing program ahead of schedule. Through, the domestic indices ended the session in negative territory, it was more or less stable day as the indices remained in tight range below neutral line with minute losses for most part of the session as a drop in Banking, information technology (IT) and Oil & Gas counters were offset by some gains in Realty, Metal and Auto stocks. Good buying was witnessed in select mid-cap and small-cap stocks. For today's trade nifty likely to trade in the range between 8765 – 8785 in the upper side and 8725 – 8715 in the lower side.

### MARKET LEVELS

	CMP	SUPPORT LEVELS				RESISTANCE LEVELS			
NIFTY	8743	8725	8715	8685	8675	8765	8785	8795	8835
USDINR	66.72	66.6	66.55	66.5	66.4	66.8	66.85	66.9	67





#### BULK DEALS (BSE)

SCRIP	CLIENT NAME	BUY/SELL	QUANTITY	PRICE
GOODYEAR	GOLDMAN SACHS INDIA FUND LIMITED	B	123,895	779.98
UVBOARDS	REMEX INVESTMENT PVT LTD	S	100,000	19.37

#### BULK DEALS (NSE)

SCRIP	CLIENT NAME	BUY/SELL	QUANTITY	PRICE
MCLEODRUSS	MERRILL LYNCH MARKETS SINGAPORE PTE. LTD.	BUY	572500	174.55
SUPREMETEX	SINDIA INVESTMENT GROUP PTE LIMITED	SELL	1702159	7.44
EXCEL	RADHIKA DUBASH	BUY	228000	44.41

#### SCRIP'S IN F&O BAN

(To resume for normal trading below 80% of market wide limit required)

IBREALEST, JINDALSTEL

#### Initial Public Offering (IPO)

Company Name	Security type	Issue Start Date	Issue End Date	Status
Endurance Technologies Ltd	Equity	05-Oct-2016	07-Oct-2016	OPEN



NIFTY 50 STOCKS: SUPPORT & RESISTANCE						
Symbol	Close	Support 1	Support 2	Pivot Point	Resistance1	Resistance2
ACC	1638	1624	1611	1636	1650	1662
ADANI PORTS	265	263	261	266	269	272
AMBUJACEM	256	254	251	256	258	260
ASIANPAINT	1209	1188	1167	1206	1227	1245
AXISBANK	536	529	522	540	546	557
BAJAJ-AUTO	2858	2833	2807	2871	2897	2935
BANKBARODA	169	168	166	170	172	175
BHARTIARTL	322	319	317	323	325	328
BHEL	137	135	134	137	139	140
BOSCH LTD	22804	22695	22587	22815	22923	23043
BPCL	650	634	618	643	659	668
CAIRN	222	218	215	221	224	227
CIPLA	592	588	584	594	598	604
COALINDIA	321	319	316	321	324	326
DRREDDY	3123	3102	3081	3126	3147	3171
GAIL	400	397	394	402	406	411
GRASIM	4934	4893	4853	4942	4983	5032
HCLTECH	816	807	798	815	824	832
HDFC	1423	1413	1402	1425	1436	1448
HDFCBANK	1286	1275	1264	1288	1299	1311
HEROMOTOCO	3491	3466	3440	3512	3537	3584
HINDALCO	157	156	154	157	159	161
HINDUNILVR	871	864	858	869	876	880
ICICIBANK	255	253	251	257	259	263
IDEA	80	79	78	81	82	84
INDUSINDBK	1216	1206	1196	1220	1229	1243
INFY	1042	1036	1030	1043	1049	1056
ITC	240	239	237	241	243	245
KOTAKBANK	782	777	772	786	791	800
LT	1454	1443	1432	1452	1464	1473
LUPIN	1492	1484	1475	1493	1502	1512
M&M	1399	1387	1376	1407	1418	1438
MARUTI	5689	5652	5616	5710	5746	5804
NTPC	152	151	149	152	154	156
ONGC	267	263	260	269	273	279
PNB	144	143	141	145	147	150
POWERGRID	181	180	179	182	183	185
RELIANCE	1089	1081	1073	1094	1102	1115
SBIN	261	259	256	262	264	267
SUNPHARMA	759	755	751	762	766	773
TATAMOTORS	560	552	545	557	565	570
TATAPOWER	78	78	77	78	79	80
TATASTEEL	391	388	385	392	395	400
TCS	2386	2370	2353	2393	2409	2432
TECHM	425	421	417	427	431	437
ULTRACEMCO	4033	3967	3900	4006	4072	4111
VEDL	192	189	186	191	194	196
WIPRO	480	476	473	480	483	486
YESBANK	1279	1268	1256	1283	1294	1309
ZEEL	567	561	555	568	574	581



## NEWS & RUMOURS:

- Gold (Spot Dollar) major support = \$1248/\$1222 & Resistance = \$1305/\$1339.
- Crude oil range->\$45 to \$55.
- Treasuries fall as U.S. Data Spur Fed Bets; Stocks Rise with Oil: - Bonds extended losses after data showing expansion in the biggest segment of the world's largest economy bolstered speculation on higher U.S. interest rates. Stocks rose with oil.
- Dollar slips ahead of data; sterling recovers from 30-year lows: - Dollar off highs Wednesday ahead of U.S data; sterling off 30-year lows. The [dollar index](#) was down 0.11% at 95.99 at 05:00 ET after high of 96.09. Fed member Charles Evans said earlier Wednesday he was "fine" with December hike if data warrant it.
- U.S. natural gas falls towards 3-week low ahead of weekly storage data: - U.S. natural gas futures fell to the lowest level in almost three weeks on Wednesday, as market players looked ahead to fresh weekly information on U.S. gas inventories to gauge the strength of demand for the fuel.
- Oil rallies 2% to 4-month highs as crude stocks drop 3.0M barrels: - Oil prices added to strong gains in North American hours on Wednesday, touching a fresh four-month high after data showed that crude supplies in the U.S. fell for the fifth week in a row. The U.S. Energy Information Administration said in its weekly report that [crude oil inventories](#) fell by 2.976 million barrels in the week ended September 30. Market analysts' expected a crude-stock gain of 2.56 million barrels, while the American Petroleum Institute late Tuesday reported a supply drop of 7.6 million barrels.

## TRENDS & OUTLOOK – DATE: 06- Oct- 2016

### PRECIOUS METALS:

COMMDITY (MCX)	S2	S1	PIVOT POINT	R1	R2
GOLD (Dec)	29401	29610	29970	30270	30630
SILVER (Dec)	40500	41400	42600	43500	44820

### BASE METALS

COMMDITY (MCX)	S2	S1	PIVOT POINT	R1	R2
COPPER (Nov)	313	318	322	327	331
ZINC (Oct)	150.50	153.45	157.20	159.45	162.30
LEAD (Oct)	130.30	133.45	137.10	139.30	142.45
NICKEL (Oct)	645	657	671	690	711

### ENERGY

COMMDITY (MCX)	S2	S1	PIVOT POINT	R1	R2
CRUDE OIL (Oct)	3040	3165	3300	3445	3560
NATURAL GAS (Oct)	186	191	196	203	207

### DATA TALKS : TODAY'S ECONOMIC DATA :

ECB Monetary Policy Meeting Accounts, Challenger Job Cuts y/y, Unemployment Claims, Natural Gas Storage.





LET THE  
WOMAN  
POWER RISE

**WOMEN  
DESK**

All the Ladies in the house are  
cordially invited to come  
& explore their trading talents.

**TOLL FREE: 18001030059**





Registered Office

Indira House, 3rd Floor, 5 Topiwala Lane,  
Opp. Lemington Road Police Station, Grant Road (East), Mumbai - 400007.

Corporate Office

'Ramavat House' E-15, Saket Nagar, Indore - 452018 (M.P.)

Customer Care

Tel: +91-731-4097170/ 71/ 72/ 73/ 74 M. +91 93031 72345

Email: [customercare@indiratrade.com](mailto:customercare@indiratrade.com) [www.indiratrade.com](http://www.indiratrade.com)



INSTITUTIONAL DEALING UNIT

Africa House, 5, Topiwalla Lane, Lamington Road, Mumbai, 400007

Tel: +91 22 30080678 Fax : +91 22 23870767 Email : [ie@indiratrade.com](mailto:ie@indiratrade.com)

**Disclaimer**

This report is for private circulation within the Indira Group. This report is strictly confidential and for information of the selected recipient only and may not be altered in any way, transmitted to, copied or distributed, in part or in whole, to any other person or to the media or reproduced in any form. This report should not be construed as an offer or solicitation to buy or sell any securities or any interest in securities. It does not constitute a personal recommendation or take into account the particular investment objectives, financial situations, or any such factor. The information, opinions estimates and forecasts contained here have been obtained from, or are based upon, sources we believe to be reliable, but no representation of warranty, express or implied, is made by us to their accuracy or completeness. Opinions expressed are our current opinions as of the date appearing on this material only and are subject to change without notice.